

iWetland

McMaster University Ecohydrology Crowdsourcing
Citizen Water Science in Action



Managing Species at Risk Habitat through Wetland Water Level Crowdsourcing

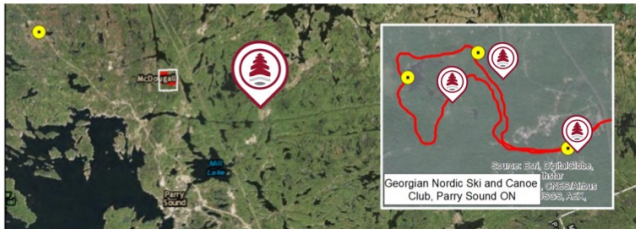


The Georgian Bay Biosphere Reserve is a UNESCO designated area of geological and biological importance. The reserve comprises the world's largest freshwater archipelago and a complex combination of wetlands, forests and open rock barrens. The wetlands in this region include open-water coastal wetlands, inland riparian swamps, shallow marshes, peatland bogs, and vernal pools that are important habitat for reptile species at risk. iWETLAND is a crowdsourced water level monitoring project that engages citizens to participate in hydrological data collection by texting in the water level at various locations within the Georgian Bay Biosphere Reserve.

1

Choose an iWETLAND station

Visit our Facebook page for a list of locations:
www.facebook.com/iwetland



2

Hike, bike or paddle to the station

Using the GPS co-ordinates and/or Google maps look for the iWETLAND sign.

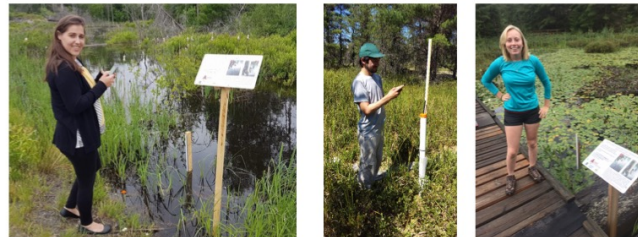
iWETLAND: Crowd-Sourced Wetland Science
Text us the water level!

1. Locate the ruler in the wetland. Approach along the marked path, taking care not to disrupt the wetland.
2. Read the height of the rod using the attached ruler.
3. Text the location (_____) and height (in cm) separated by a comma to 437-800-2704. ex. Location, 50.4

iWETLAND is a crowd-sourced science project co-ordinated by the McMaster Ecohydrology Group that monitors water levels in critical wetland ecosystems. Wetlands such as this are essential nesting and habitation sites for several species at risk. Through crowd-sourced data, this project encourages citizen science across the Georgian Bay Biosphere Reserve. For more information, visit ecohydrology.mcmaster.ca/iwetland

3

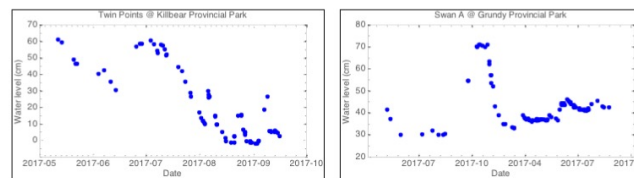
Find the iWETLAND station and read the water level off the well or ruler



4

Text the water level to the iWETLAND citizen science database.

You will then receive a confirmation and can view the water level data on our Facebook page.



5

Engage in our iWETLAND research

Stay informed by attending our talks! We visit schools, provincial parks, and organizations around the Georgian Bay Biosphere Reserve.



6

Our iWETLAND partners

This project is funded in part by the RBC Blue Water Initiative, made possible by a generous gift from the RBC Foundation. We greatly appreciate the support of our community partners.



[facebook.com/iWetland](https://www.facebook.com/iWetland)

[@iWetland](https://www.instagram.com/iWetland)